



exhibition schedule

2026.03 → 2027.06

exhibition schedule

※Please check the website for details.

2026

3

March 20 – June 14, 2026

Special
Exhibition

4

5

6

7

8

9

10

11

12

2027

1

2

3

4

5

6

René Lalique: Elegant French Decorative Art Carrying on the Work of Émile Gallé and the Daum Frères

The French craftsman René Lalique (1860-1945) was active both in the fields of jewelry and glass. This exhibition, drawn primarily from the Luchi Collection (deposited at the National Crafts Museum), focuses on Lalique's creations along with craft and design works of the same era. Savor the world of French decorative art through Lalique's jewelry and glass art as well as epoch-defining furniture and posters.

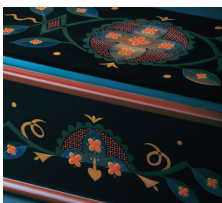


René Lalique,
Brooch, Winged Sylph, c.1898,
housed at the National Crafts Museum
Photo: S&T PHOTO © 2019

July 3 – September 23, 2026

Independent Study for Kids & Adults: Patterns of Delight 2

Neat and simplistic designs are nice, but there is something exciting about a pattern. This is perhaps because the world of patterns is a collection of our favorite things, and it is also filled with our heartfelt wishes. Why not visit the things you love as you compare pattern motifs and expressions such as singular vs. plural, geometric shapes vs. physical and chemical phenomena, and fauna vs. flora? We have also prepared study kits for your enjoyment.



ISOYA Akira,
Letter box, floral pattern, maki-e, 1934,
housed at the National Crafts Museum

October 9, 2026 – January 11, 2027

A Design Chronicle: What Was Created? What Changed? (tentative title)

Design is an approach to a new type of manufacturing intended to address issues that emerged through modernization. This exhibition traces design currents from a roughly 100-year period through works in the museum collection, beginning with the Arts and Crafts movement of the late 19th century, and continuing on to modern design, as exemplified by Art Déco, Art Nouveau, and the Bauhaus, and post-World War II developments.



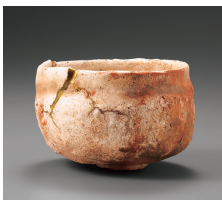
Ludwig Mies van der Rohe,
MR10 chair, 1927
housed at the National Crafts Museum,
Photo: S&T PHOTO © 2021

February 26, – June 6, 2027

Kintsugi

Special
Exhibition

Kintsugi (lit., "golden repair") is a technique of repairing cracks and chips in ceramics by applying lacquer and gold powder. This method of restoration, constantly in use since the Middle Ages, is rooted in the Japanese concepts of preserving and passing things down, and finding beauty in imperfection. The exhibition traces the history of *kintsugi* while also focusing on the aesthetic of imbuing artworks with new beauty and value through regeneration. Enjoy this world of beauty and rebirth based on the strong message of *kintsugi*.



KAWAKITA Handeishi,
Tea bowl, "Aka-fudo", shino type, 1949,
housed at the National Crafts Museum,
Photo: S&T PHOTO © 2016