

The National Museum of Modern Art, Tokyo

ENGLISH

# MAP & GUIDE





Photo: haruharehinata

## [The National Museum of Modern Art, Tokyo](#)

The National Museum of Modern Art, Tokyo (MOMAT), holds the distinction of being Japan's first national art museum. Located across from the Imperial Palace grounds, it is home to one of Japan's largest art collections with holdings encompassing over 14,000 items. Works include an impressive array of masterpieces dating from the end of the 19th century to the present by both Japanese and international artists.

The Imperial Palace and its grounds, Kitanomaru Park, and Chidorigafuchi Moat are located nearby. This location offers museum visitors a unique opportunity to immerse themselves in not only art. A stroll through these surroundings can greatly enrich the MOMAT experience, providing a deeper connection to the Japanese cultural heritage and natural beauty embedded in them.

## [Architecture](#)



Photo: Kato Ken

MOMAT was established in Kyobashi in 1952. In 1969, it relocated to Takebashi, where it stands today. The design of the current building was entrusted to architect Taniguchi Yoshiro (1904–1979). In his 1974 work, *Kenchiku ni Ikiru* (Living for Architecture), Taniguchi reflected on the significance of the museum's location. He described Takebashi, situated near the Edo Castle Moat and the Marunouchi business district, as an "interface between past Japan and the modern city of Tokyo." This concept is central to the architectural philosophy behind MOMAT, encapsulating the museum's commitment to honoring history and engaging with the evolution of Tokyo.

## Highlights: How to Get the Most Out of Your MOMAT Visit

### Absolute must-see

The MOMAT Collection on the 4th–2nd floors, with works rotated several times a year.

The MOMAT Collection presents about 200 pieces of art at a time. It is one of Japan's foremost exhibitions allowing visitors to trace the history of Japanese art from the end of the 19th century to the present.



### Recommended!

#### A Room With A View

Situated on the top floor of the museum, the rest area "A Room With A View" invites guests to relax and recharge in abundant natural sunlight. Its expansive windows reveal a panoramic view of the Imperial Palace's lush grounds and the Marunouchi skyline.



#### Souvenirs

The Museum Shop carries postcards and other unique items based on works from the Museum collection, imported items, exhibition catalogues, and books. It is open to the public and can be entered without an exhibition ticket.



Free! No reservation needed

#### Collection Tour "Explore with Us"

Join our guides to explore the very best of the National Museum of Modern Art, Tokyo (MOMAT), home to one of the most extensive exhibitions of any collection in Japan.

The 30-minute tour by MOMAT volunteers is a great opportunity to view representative artworks from the museum's vast collection while getting acquainted with the Japanese modern art.



Photo: Kato Ken

#### Restaurant

Produced by chef Kiyomi Mikuni, L'Art et Mikuni serves artistic dishes in a fusion of French and Italian cuisine. The large restaurant windows look out over the Imperial Palace with its colorful foliage that changes with the seasons.



Open till 8 pm on Fridays and Saturdays.

Come for a leisurely visit after a daytime outing!

#### Get even more out of the MOMAT Collection

MOMAT holds seasonal events featuring artworks as well as family-friendly programs offering relaxation for parents and fun for the kids.

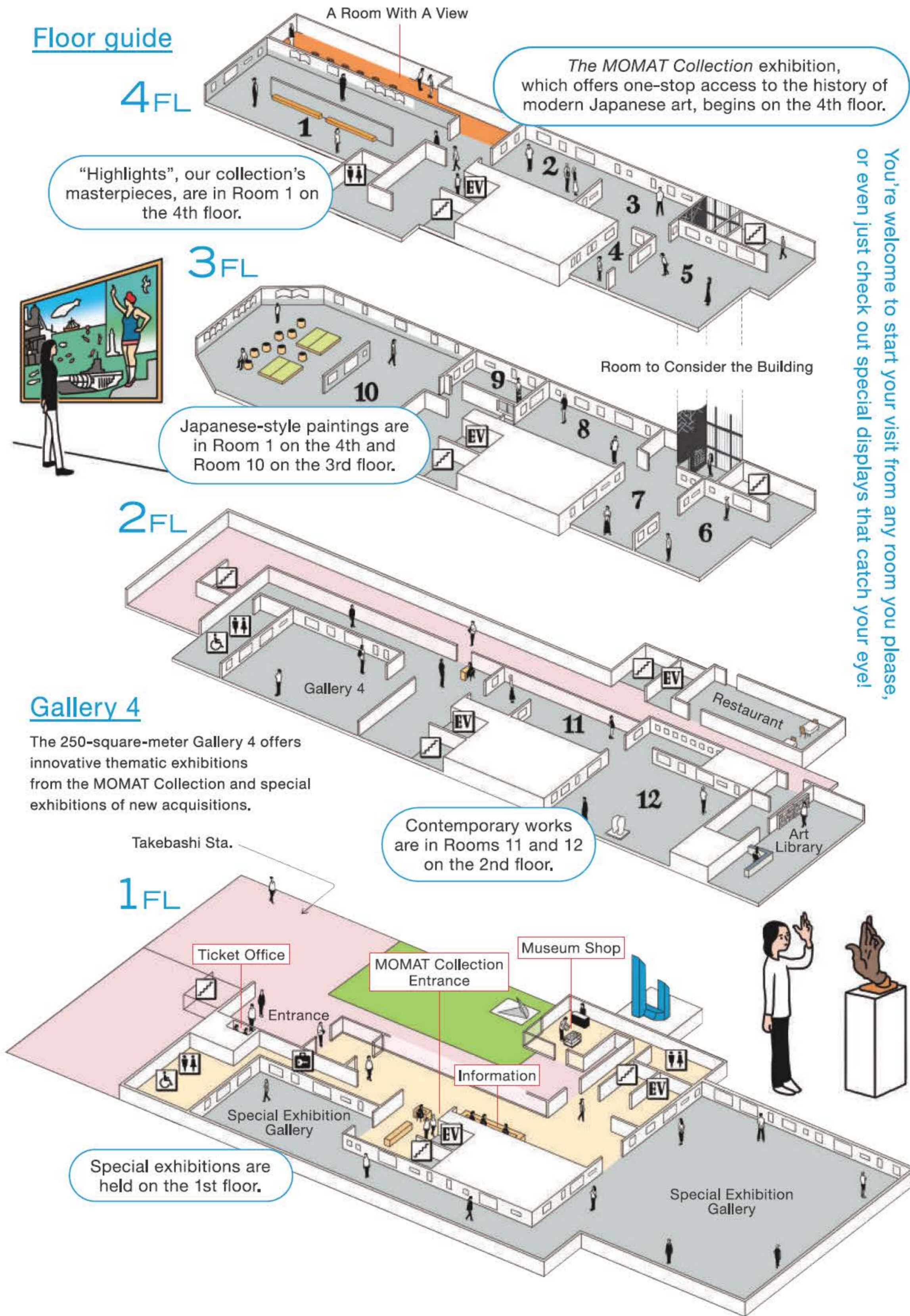
The museum also offers limited-run programs during events, and food trucks offer food and beverages.



Photo: haruharehinata

Visit our website for details.

## Floor guide



## Gallery 4

The 250-square-meter Gallery 4 offers innovative thematic exhibitions from the MOMAT Collection and special exhibitions of new acquisitions.

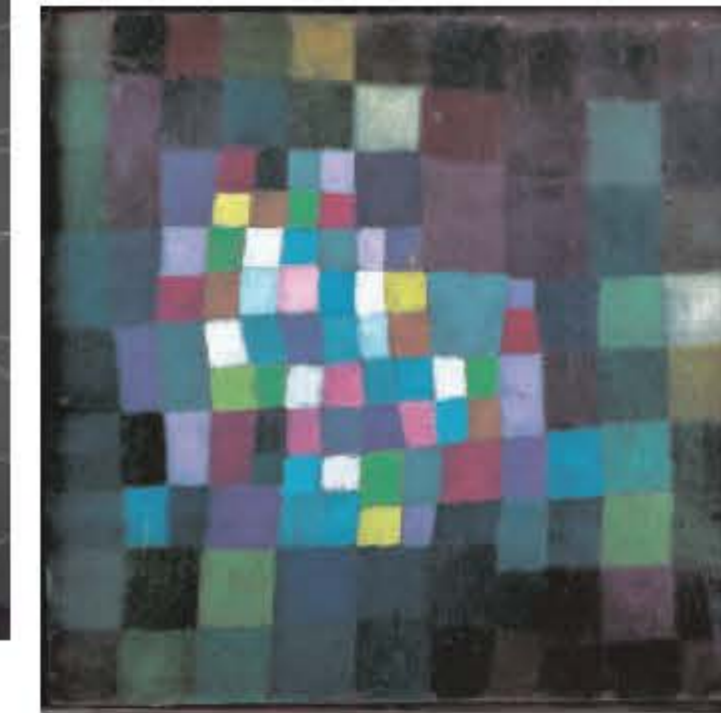
## MOMAT Collection

One of the museum's defining attributes is its substantial collection encompassing nearly 14,000 items. It houses masterpieces of Japanese- and Western-style painting, prints, watercolors, drawings, sculptures, photographs, videos and installations. 18 works have been designated National Important Cultural Properties by the Japanese government, such as Wada Sanzo's *South Wind* and Uemura Shoen's *Mother and Child*, more-familiar pieces like Takamura Kotaro's *Hand*.



Photography permitted

Some works may not be photographed. See the museum's photography guidelines for details.



## Free MOMAT Collection GUIDE APP Bloomberg Connects

Try out our free guide on Bloomberg Connects to get expert insights, see context, and discover more curated content.

<https://www.bloombergconnects.org/>



From top left, clockwise: Wada Sanzo *South Wind* 1907, National Important Cultural Properties / Uemura Shoen *Mother and Child* 1934, National Important Cultural Properties / Kawase Hasui *The Zojo-ji Temple, Shiba from Twenty Tokyo Scenes* 1925 / Takamura Kotaro *Hand* c.1918 Photography by Otani Ichiro / Paul Klee, *Abstraction with Reference to a Flowering Tree* 1925 / Sol LeWitt *Wall Drawing#769: A 36-inch (90cm) grid covering the black wall. All two-part combinations using arcs from corners and sides, and straight and not straight lines, systematically.*, 1994 Courtesy the Estate of Sol LeWitt, Massimo De Carlo and TARO NASU. Copyright the Estate of Sol LeWitt. Photography by Kioku Keizo

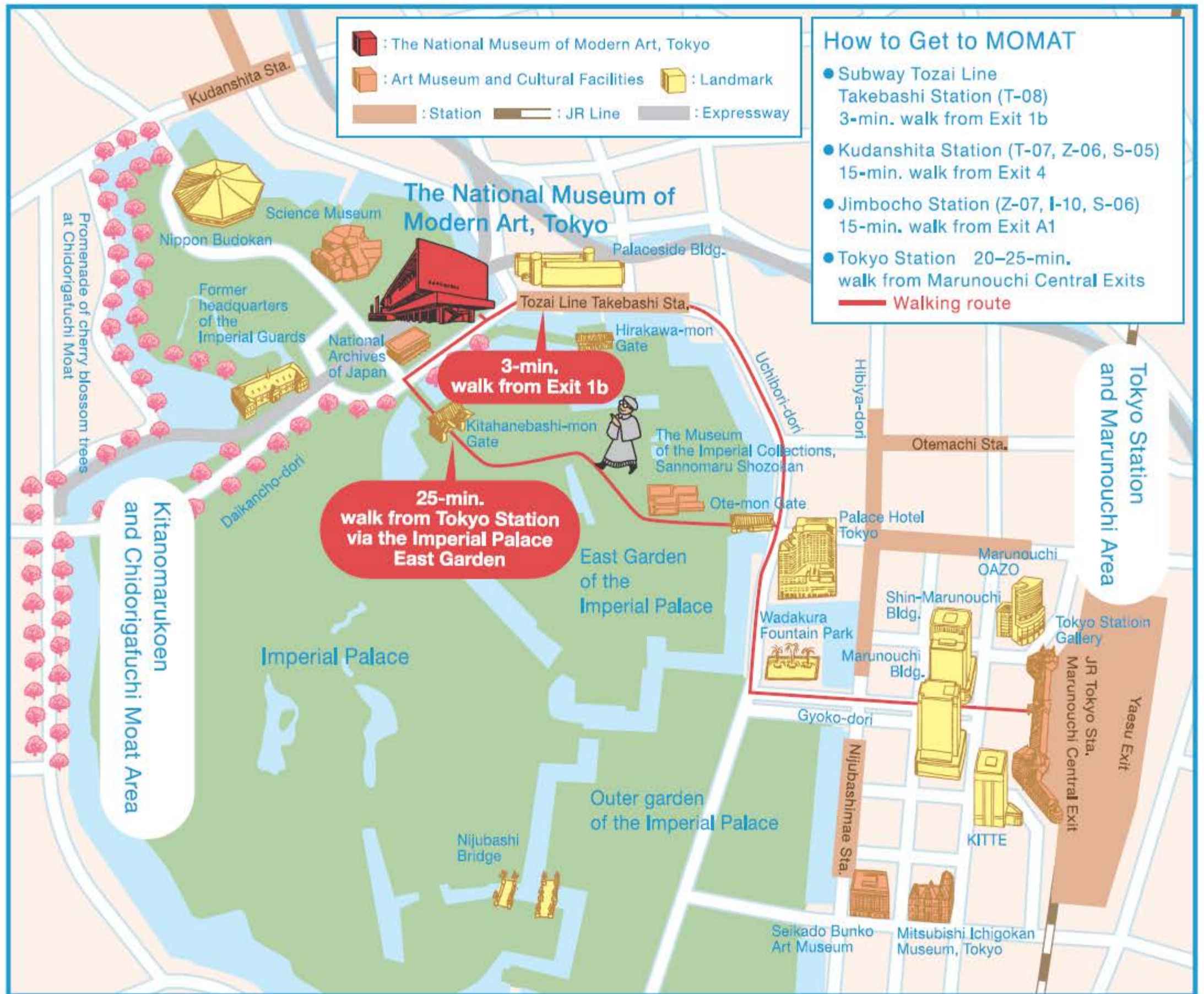
## Special Exhibitions

These carefully planned exhibitions are organized several times a year. They include solo exhibitions by renowned Japanese and international artists and thematic exhibitions exploring times events and society.



Installation view of the exhibition "Trio: Modern Art Collections from Paris, Tokyo and Osaka Exhibition" organized with the collaboration of the Musée d'Art Moderne de Paris, Paris Musées", 2024 Photo: Kioku Keizo

# Location & Nearby Attractions



## Visit

**Address**

**Hours**

**Closed**

**Admission**

**Telephone**

**Website**

## The National Museum of Modern Art, Tokyo

3-1 Kitanomaru-koen, Chiyoda-ku, Tokyo 102-8322, Japan

10 am–5 pm (8 pm on Fridays and Saturdays)

Final admission: 30 minutes before closing

Mondays (except Mondays following a public holiday, when it is closed the following Tuesday), the New Year holidays, and during installation of new exhibitions.

Visit the MOMAT website for details:

[www.momat.go.jp/en/tickets](http://www.momat.go.jp/en/tickets)

Hello Dial: +81-(0)47-316-2772 (international calls)

050-5541-8600 (domestic calls)

<https://www.momat.go.jp/en>

## Art Library

A library specializing in modern art

### Library hours

Tuesdays–Saturdays:

10:30 am–5:00 pm

(admission until 4:30 pm)

Closed holidays, when the museum is closed, and for maintenance



Nara Yoshitomo, *Harmless Kitty*, 1994 © Yoshitomo Nara

Note: This work may not be on display due to changes in the exhibition lineup.

Art Direction & Design: Tabei Mina, Kakizaki Risa  
 Illustrations: Abe Shinji  
 Edited & published by The National Museum  
 Modern Art, Tokyo  
 © 2026, The National Museum Modern Art, Tokyo.  
 Printed in Japan  
 Information as of March 2026