

ENGLISH

Includes a map of neighboring areas:
Tokyo Station, the Imperial Palace, and Jimbocho

(MAP
&
GUIDE)

The National Museum of Modern Art, Tokyo



東京国立近代美術館



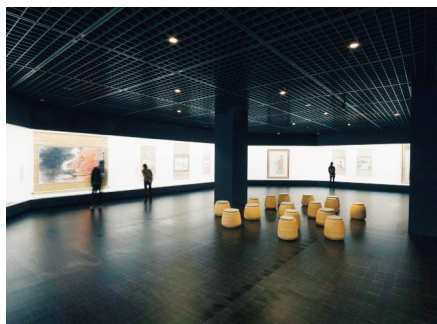


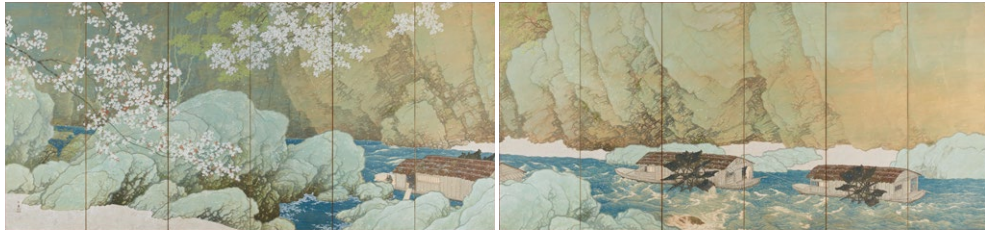
About the MOMAT

The National Museum of Modern Art, Tokyo (MOMAT), is Japan's first national art museum and is located across from the Imperial Palace. The museum is home to one of Japan's largest art collections, comprising a total of over 13,000 items, including countless masterpieces dating from the end of the 19th century to the present day by both Japanese and foreign artists. The *MOMAT Collection* exhibition presents a rotating selection from the collection. It is one of the foremost exhibitions in Japan, offering insight into more than a century of Japanese art in a single venue.

In addition to special thematic exhibitions featuring Japanese and overseas art held several times a year in the gallery on the first floor, the relaxation space *A Room With A View* on the fourth floor offers a must-see view.

Near MOMAT are the Imperial Palace, Kitanomaru Park, and Chidorigafuchi Moat, where visitors can enjoy Japanese culture and rich natural surroundings. A stroll around the area and a visit to MOMAT will make for an exciting combination.





A



B



C



D

A: Kawai Gyokudo, *Parting Spring*, 1916,
Important Cultural Property
B: Kishida Ryusei, *Reiko, Five Years Old*, 1918
C: Fujita Tsuguharu, *Five Nudes*, 1923
©Fondation Foujita / ADAGP,
Paris & JASPAR, Tokyo, 2023 E5049
D: Ota Chou, *Women Observing Stars*, 1936

MOMAT Collection

The main feature of the Museum is its substantial collection comprising more than 13,000 items. It houses masterpieces of Japanese and Western-style painting, prints, watercolors, drawings, sculptures, photographs, and videos, including works designated by the Japanese government as Important Cultural Properties such as Kawai Gyokudo's *Parting Spring*, as well as familiar pieces such as Kishida Ryusei's *Reiko, Five Years Old* and Fujita Tsuguharu's *Five Nudes*.

In the 3,000-square-meter (32,292 square-foot) collection gallery on the fourth to second floors, the collection exhibition *MOMAT Collection* presents about 200 pieces at a time, with works replaced several times a year. It is one of the foremost exhibitions in Japan, allowing visitors to trace the history of Japanese art from the end of the 19th century onward along with overseas works that influenced Japanese artists.

Special Exhibitions

Special exhibitions are held several times a year in the galleries on the first floor, including solo exhibitions of works by renowned artists and thematic exhibitions shedding new light on social conditions.



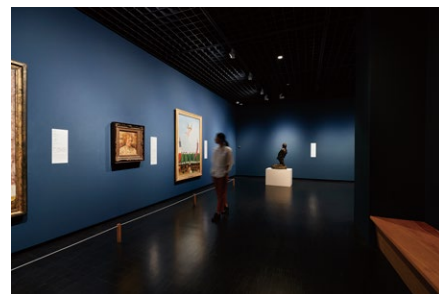
Commentary on about 80 works in Japanese, English, Chinese, and Korean is available for free download to smartphones.



You may take photographs in the collection galleries. (Photographs may be used only for personal record.) Please read the guidance at the entrance.



Our collection gallery consists of twelve rooms on three floors. The 4th floor presents works from between 1900 and 1940; the 3rd floor those from between 1940 and 1970, Japanese-style paintings, and photographs; and the 2nd floor works from 1970 onward.



Facilities



In the *Room to Consider the Building* on the third floor of the Collection Gallery, visitors can also enjoy a wall drawing by Sol LeWitt. This is an unusual work that continues to be newly executed even after the death of the artist.

Sol LeWitt, *Wall Drawing #769: A 36-inch (90cm) grid covering the black wall. All two-part combinations using arcs from corners and sides, and straight and not straight lines, systematically.*, 1994
Courtesy the Estate of Sol LeWitt, Massimo De Carlo and TARO NASU. Copyright the Estate of Sol LeWitt.
Photography by Kioku Keizo



The museum is usually open until 8:00 p.m. on Fridays and Saturdays. Take your time to enjoy your visit after a daytime outing.



Other facilities include L'ART ET MIKUNI, an authentic French restaurant managed by chef Mikuni Kiyomi, the Museum Shop offering exclusive museum merchandise, and the Art Library.



A lounge named *A Room With A View* is located on the top floor of the building. The large window affords a panoramic view of the Imperial Palace with abundant nature, the skyscrapers in the Marunouchi district, and the sky over Tokyo. Enjoy a relaxing time by the bright window.

Visit

[Hours]

Tuesdays through Thursdays and Sundays:

10:00 a.m.—5:00 p.m. (admission until 4:30 p.m.);

Fridays and Saturdays:

10:00 a.m.—8:00 p.m. (admission until 7:30 p.m.)

[Closed]

Mondays

(open if Monday is a national holiday and closed on the following day) and during installation periods and New Year holidays

[Admission]

MOMAT Collection: ¥500;

¥250 for university and college students

- Evening Discount (after 5:00 p.m. on Fridays and Saturdays): ¥300;

¥150 for university and college students

- Free for high school students under 18 and seniors over 65; persons with disabilities and up to one accompanying person each are admitted free of charge.

*Excluding special exhibitions.

[Directions]

3-minute walk from Exit 1b, Takebashi Station (T-08)

[Address] 3-1 Kitanomaru-koen, Chiyoda-ku, Tokyo102-8322

[Website] www.momat.go.jp/english

[Contact] Hello Dial: +81-47-316-2772 (for international calls); 050-5541-8600 (for domestic calls)



Edited by: The National Museum of Modern Art, Tokyo,
Art Direction & Design: Tabei Mina, Cover Photography: Shirakawa Seishi,
Illustration: Abe Shinji,
Published by: The National Museum of Modern Art, Tokyo
© 2023 The National Museum of Modern Art, Tokyo Printed in Japan
*The information in this brochure is as of March 2023.

AROUND MOMAT

MOMAT is located near the Imperial Palace right in the center of Tokyo. A little way from Tokyo Station, it is surrounded by a vibrant green environment and cultural spots including art museums. Going a few miles farther, you can also enjoy historical landmarks and unique neighborhoods in this charming area.

Kitanomaru Park and Chidorigafuchi Moat
At the center of Tokyo, visitors to Kitanomaru Park and Chidorigafuchi Moat can enjoy rich natural surroundings from season to season. In addition to their colorful autumn leaves, these are some of Japan's most renowned places for cherry-blossom viewing that attract large crowds every spring.

The National Museum of Modern Art, Tokyo

Jimbocho
One of the world's greatest centers of used bookstores, Jimbocho is also known for being dotted with bookshops specializing in art, design, and architecture. Old coffee shops and restaurants on back alleys that once attracted cultural figures are perfect for taking a break.

Kanda
Fans of historic architecture will find much to love in this area with Kanda Myojin, a shrine dedicated to the local tutelary deities; Imasa, the former residence and store of a lumber merchant built in 1927; and long-established restaurants serving soba noodles and anglerfish hotpot.

Tokyo Station and Marunouchi
A hub for transportation, Tokyo Station is within walking distance. There are many art museums and commercial buildings that offer diverse souvenirs to international visitors. The Marunouchi Entrance of the station is renowned for the beautiful reliefs in its domed ceiling.

Nihombashi
A merchants' district, Nihombashi was the center of Tokyo in the Edo period (1603-1868).

- How to Get to MOMAT**
- Tokyo Station
20–25 min. walk from Marunouchi Central Entrance
 - Walking route
 - Subway Tozai Line Takebashi Station (T-08)
3 min. walk from Exit 1b
 - Kudanshita Station (T-07, Z-06, S-05)
15 min. walk from Exit 4
 - Jimbocho Station (Z-07, I-10, S-06)
15 min. walk from Exit A1



200m

■ The National Museum of Modern Art, Tokyo
 ■ Art Museum and Cultural Facilities
 ■ Landmark
 — Station
 — JR Line
 — Expressway